



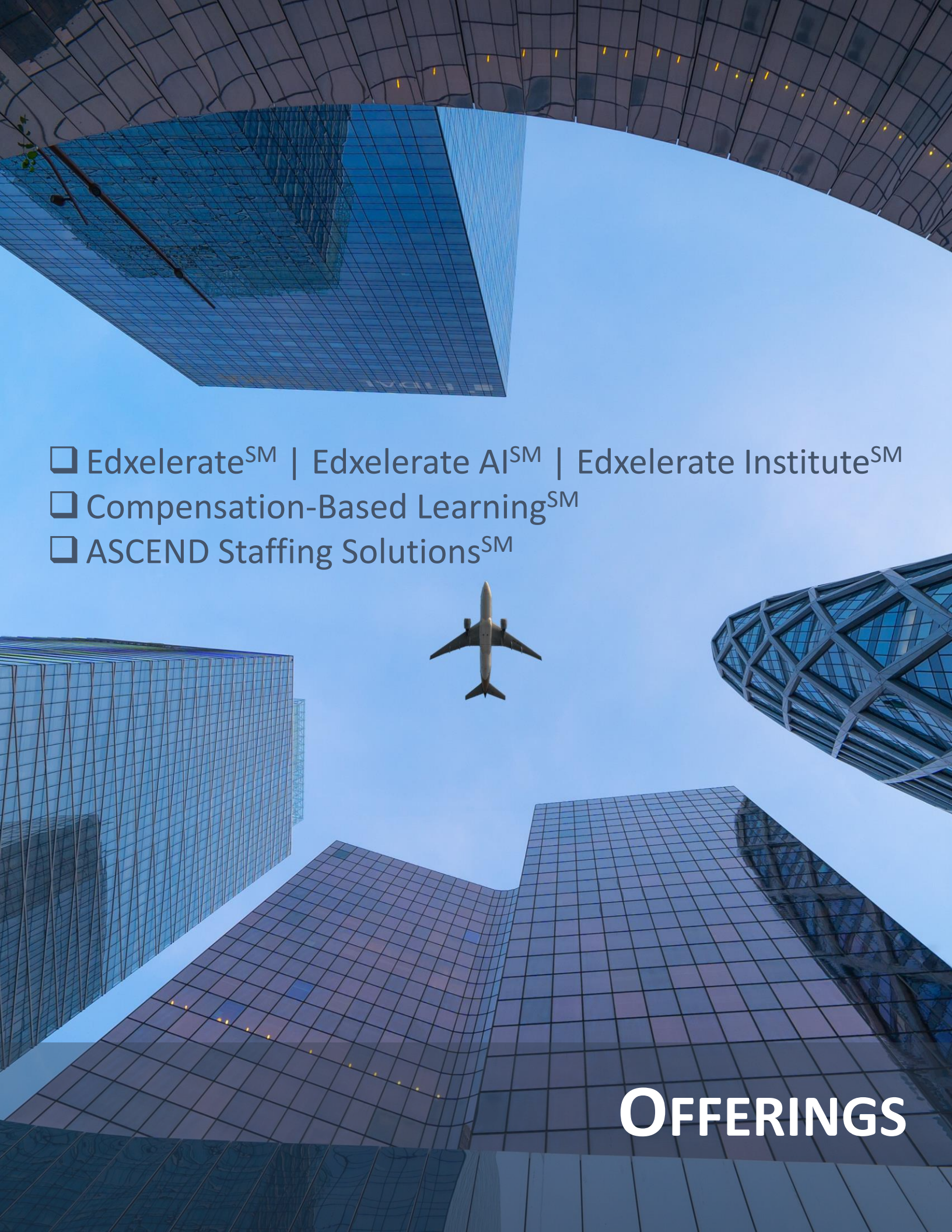
# edXelerate

*ACCELERATED EDUCATION EXCELLENCE<sup>SM</sup>*

DISTINGUISHED GLOBAL  
EDUCATION CONSULTING

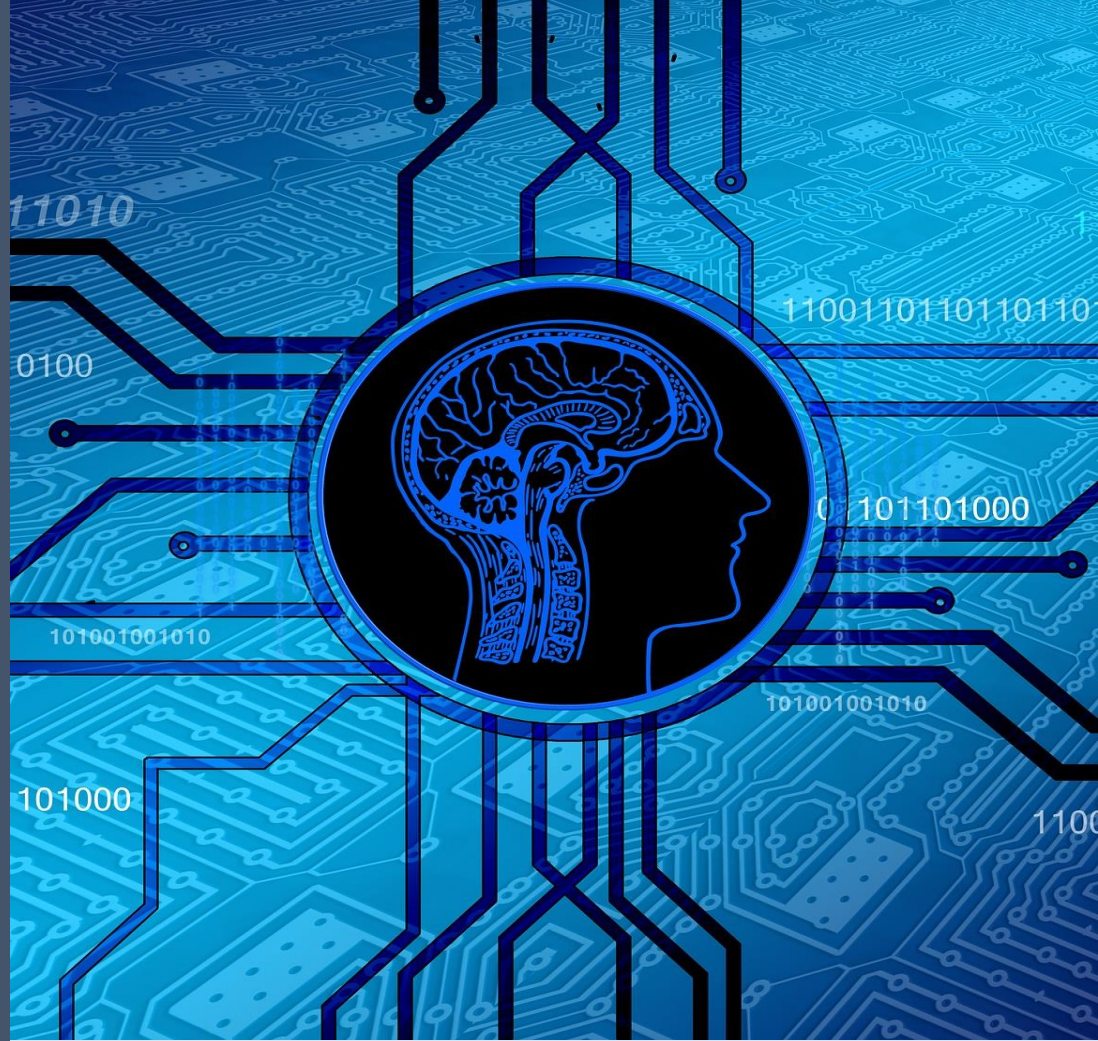
# 2 0 2 4

NORTH AMERICA | EUROPE  
MIDDLE-EAST | AFRICA | ASIA

- 
- Edxelerate<sup>SM</sup> | Edxelerate AI<sup>SM</sup> | Edxelerate Institute<sup>SM</sup>
  - Compensation-Based Learning<sup>SM</sup>
  - ASCEND Staffing Solutions<sup>SM</sup>

**OFFERINGS**

# INTRODUCTION



The rules have changed. Possession of knowledge is no longer adequate.

**Mission:** To empower the education industry / sector to excel in the era of innovations enabled by the disruptive capabilities of artificial intelligence (AI) and other cutting-edge/emerging technologies.

**Vision:** Accelerated Education Excellence<sup>SM</sup>

The unstoppable 'forces' of AI have become mainstream. One can easily access systems that have more intelligence than the entire human race.





## **EDXELERATE<sup>SM</sup> BUSINESS CONSULTING**

Agile Management, Business Process Re-Engineering, Business Sustainability, Collaborative Management, Change Management, Crisis Management, Crucial Conversations, Design Thinking, Digital Transformation, Emotional Intelligence, Gamification, Growth Hacking, Human-Centered Design, Human Resource Management, Innovation, Logistics, Metrics-Driven Management, Operations, Organizational Behavior, Outcome-Based Management, Product Management, Program Management, Project Management, Remote Management, Resource Management, Risk Management, Scrum, Servant Leadership, Situational Leadership, Supply Change Management, Strategy, Total Quality Management, Vision, etc.



$$\int_0^b \frac{(-1)^m x^{2m}}{m!} dx = \sum_{m=0}^{\infty} \frac{(-1)^m}{m!} \frac{1}{(2m+1)} x^{2m+1} \Big|_0^b$$

$$\int_0^b \frac{(-1)^m x^{2m}}{m!} dx = \sum_{m=0}^{\infty} \frac{(-1)^m}{m!} \frac{1}{(2m+1)} x^{2m+1} \Big|_0^b$$

**Compensation-Based Learning<sup>SM</sup>**

**Program, Curricula, & Courses Development**

**Licensure, Accreditation, Regulatory, & Compliance**

**Operations**

**Industry Partnerships & Affiliations**

**Competency-Based Learning**

**Technology Enhancements**

**Mentorship, Coaching, & Training**

**Improving Enrollment & Retention**

**Open Courses**

**More ...**

Artificial Intelligence (Generative and Discriminative), Autonomous Databases, Big Data, Bioinformatics, Blockchain, Cloud Computing, Cryptocurrency, Cryptography, Cybersecurity, Data Science, DevOps, Digital Trust, Digital Twins, Edge Computing, Extended Reality (Augmented Reality, Virtual Reality, and Mixed Reality), Full Stack Development, Geographic Information System (GIS), Mobile Platform, Quantum Computing, Robotic Process Automation (RPA), Web 3.0, etc.


## EDXELERATE AI<sup>SM</sup> TECHNOLOGY CONSULTING





**Custom Professional Training for  
Corporate and Individual Clients**

**EDXELERATE INSTITUTE<sup>SM</sup> TRAINING/PUBLISHING**



**Digital Books, Magazines, Newsletters,  
Journals, etc.**





Students at the secondary school and college/university levels are capable of doing real-world industrial grade work. ***Why not establish a manner in which to compensate them?***

**Compensation-Based Learning<sup>SM</sup>** delivers custom solutions to academic institutions that enable them to compensate students for their work – while ensuring the highest academic standard.

<p><b>Business / Management Operational Efficiencies / Improvements</b></p>	<p><b>Technology Operational Efficiencies / Improvements</b></p>	<p><b>Industry Project Opportunities</b></p>	<p><b>Industry Capstone / Thesis / Dissertation Opportunities</b></p>	<p><b>Industry Internships</b></p>	<p><b>Project / Hire Direct</b></p>
---	--	--	---	--	---

**COMPONENTS**

**COMPENSATION-BASED  
LEARNING**

# ASCEND Staffing Solutions<sup>SM</sup>


**ADAPTIVE SUPPORT CONCISE ENGAGEMENT DELIVERY**

*"Tap into a vast pool of distinguished professionals for conferred services, advisement, and guidance on issues and challenges facing your organization."*

## FEATURES

- On-demand employment / engagement format
- Regularly review and adapt resource requirements
- Delivery formats: On-site, remote audio / video, tele-conference, and / or email
- Service levels: Scalable, starting as low as one-hour

**ASCEND**  
Staffing Solutions



**Edxelerate<sup>SM</sup> provides business / education consulting services for the education industry/sector.**

**Edxelerate AI<sup>SM</sup> provides cutting-edge technology services for the education industry/sector.**

**Edxelerate Institute<sup>SM</sup> provides custom professional training and publishing services.**

**Compensation-Based Learning<sup>SM</sup> provides opportunities for students to receive compensation for their work.**

**ASCEND Staffing Solutions<sup>SM</sup> provides on-demand and scalable employment / engagement format for our clients.**

**EDXELERATE<sup>SM</sup> LEADS/MANAGES ALL OTHER SERVICES LISTED, IF NEEDED. CONTACT US FOR AN EXTRAORDINARY TRANSFORMATION.**



**Edxelerate<sup>SM</sup> is a division of Universal AI, Inc.**

Global Headquarters:  
5465 Legacy Drive, Suite 650  
Plano, TX 75024, USA

US Toll-Free: 888-722-1402  
International: +1-469-430-0681  
Fax: +1-469-430-0652

North America | Europe | Middle-East | Africa | Asia  
Visit: [Edxelerate.com](http://Edxelerate.com) | Contact: [Info@Edxelerate.com](mailto:Info@Edxelerate.com)

**edXelerate**